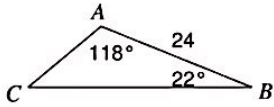


Find all sides to the nearest tenth and all angles to the nearest minute

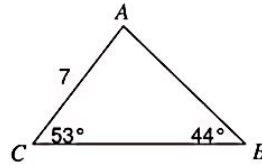
The Law of Sines

Find each measurement indicated. Round your answers to the nearest tenth.

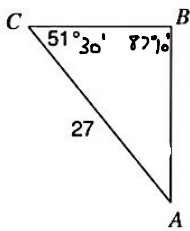
1) Find **b**



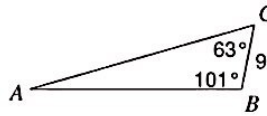
2) Find **c**



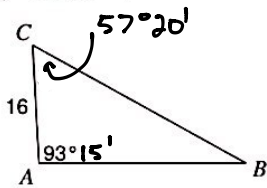
3) Find **a**



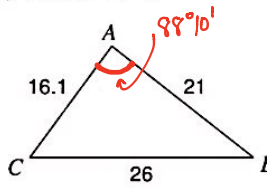
4) Find **c**



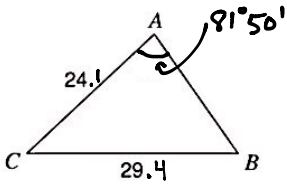
5) Find **a**



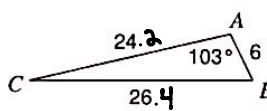
6) Find **C**



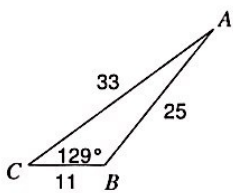
7) Find **C**



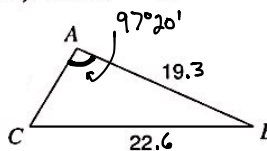
8) Find **C**



9) Find **A**



10) Find **C**



**Solve each triangle. Round your answers to the nearest tenth.**

11)  $m\angle A = 70^\circ, c = 26, a = 25$

12)  $m\angle B = 45^\circ, a = 28, b = 27$

13)  $m\angle C = 145^\circ, b = 7, c = 33$

14)  $m\angle B = 73^\circ, a = 7, b = 5$

15)  $m\angle B = 117^\circ, a = 16, b = 38$

16)  $m\angle B = 84^\circ, a = 18, b = 9$

17)  $m\angle B = 105^\circ, b = 23, a = 14$

18)  $m\angle C = 13^\circ, m\angle A = 22^\circ, c = 9$