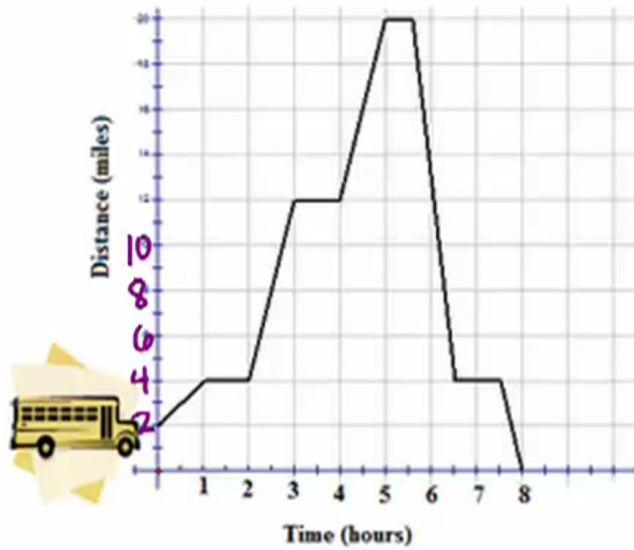


# Example A

Answer the questions below for the following broken-line graph, which shows the distance, over time, of a bus from the bus depot.



a. What was the fastest speed of the bus?

b. How many times did the bus stop on its trip? (Do not count the beginning and the end of the trip.)

c. What was the initial distance of the bus from the bus depot?

d. What was the total distance traveled by the bus?