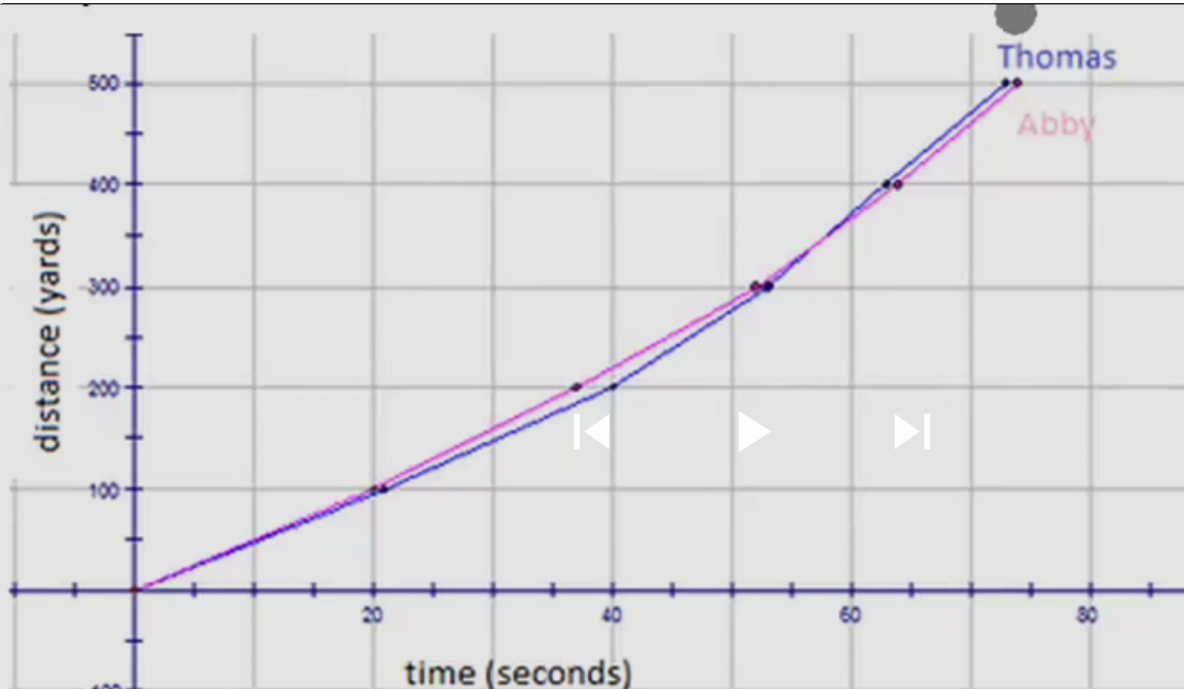


## Example A

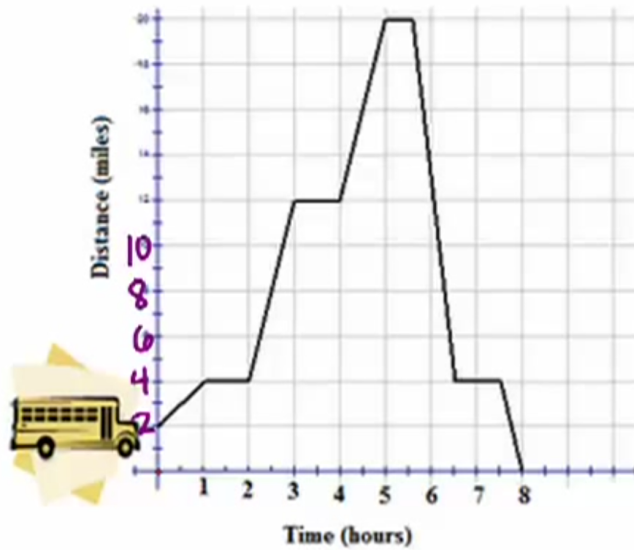
Answer the questions below for the following broken-line graph, which shows the distance, over time, of a bus from the bus depot.



- Who won the race? How do you know?
  - Between what times did Thomas (blue) appear to slow down? How do you know? ⚡
  - Between what times was Abby (red) ahead of Thomas? How do you know?
  - At what time did Thomas pass Abby? How do you know?
- 
- e. How long was the race?**

# Example A

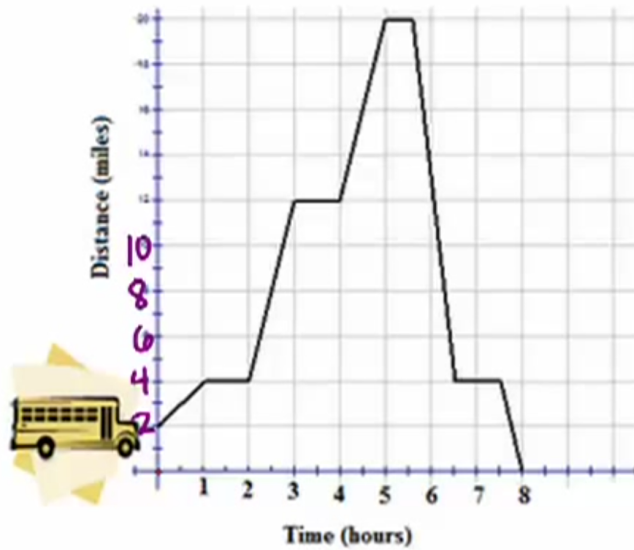
Answer the questions below for the following broken-line graph, which shows the distance, over time, of a bus from the bus depot.



- a. What was the fastest speed of the bus?
- b. How many times did the bus stop on its trip? (Do not count the beginning and the end of the trip.)
- c. What was the initial distance of the bus from the bus depot?
- d. What was the total distance traveled by the bus?

# Example A

Answer the questions below for the following broken-line graph, which shows the distance, over time, of a bus from the bus depot.



- a. What was the fastest speed of the bus?
- b. How many times did the bus stop on its trip? (Do not count the beginning and the end of the trip.)
- c. What was the initial distance of the bus from the bus depot?
- d. What was the total distance traveled by the bus?